

# EXbatt™ Battery Solutions

80 to 1170 Ah



**EXbatt™ is a Zone 1 certified battery box and part of the Bartec Technor Modular Power Systems family offering a fully scalable solution for rugged or unmanned installations – in stainless steel 316L.**

Although offered in several standard sizes, the enclosures can be tailor made to a project specific footprint or battery requirement. Provided special conditions for safe use are met, the EXbatt™ can be used as stand-alone battery enclosure in temperatures -40°C to +55°C\*.

\* depends on the chosen variant.

## FEATURES

- rugged and mechanically strong construction
- supplied with truck lifting pockets in plinth as standard
- easy access for maintenance
- scalable capacity and voltage
- Lead Acid battery technology is used

## APPLICATIONS

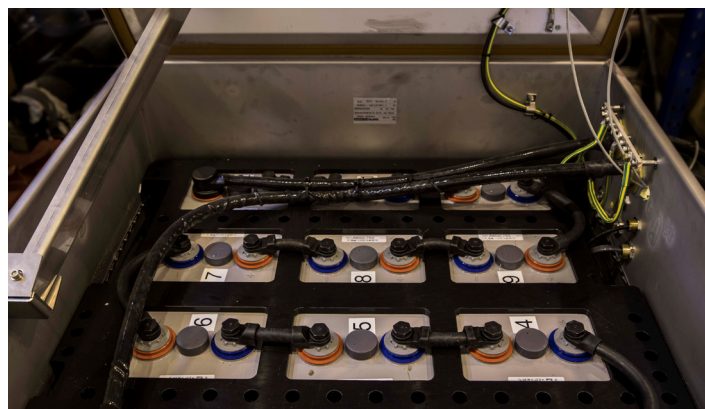
- rugged power storage bank for critical system operation on or offshore
- combination with UPS

## Technical Data

Material	Stainless steel, SS316L
Ingress protection	IP43 / IP45
Surface treatment	Shot blasted and acidized
Min/Max temperature	-40°C to +55°C

## Certification

ATEX	Presafe 16ATEX8208X
IECEX	IECEX PRE 21.0002X
Standards	EN/IEC 60079-0, 60079-7, 60079-18



## Standard sizes and technical information

Type Code	Nominal Voltage [VDC] [U <sub>N</sub> ]	Nominal Capacity [Ah] [Ah <sub>N</sub> ]	Enclosure type	Dimensions of enclosure WxDxH [mm]	Max charging current [A] @ C/4	Max charging voltage [V]	Max discharge capacity @1,75Vpc [A] @ 35°C and 0,5h @ 1,75 Vpc	Max battery temp [°C]	Temp class T4 (135°C) T° amb [°C]	Temp class T5 (100°C) T° amb [°C]	Temp class T6 (85°C) T° amb [°C]	Fixing dimensions WxD [mm]	Fixing dimensions ØD holes [mm]	IP rating	Weight Approx [kg]
EXbatt™ 1280	12	80	TNCN364962	360x490 x620	8	14,4	80	65	NA	-40 to +55	-40 to +55	330 x490	4x Ø12	IP43	75
EXbatt™ 12150	12	150	TNCN364962	360x490 x620	15	14,4	160	65	NA	-40 to +55	-40 to +50/55	330 x490	4x Ø12	IP43	99
EXbatt™ 2480	24	80	TNCN364962	360x490 x620	8	28,8	80	65	NA	-40 to +55	55	330 x490	4x Ø12	IP43	101
EXbatt™ 24150	24	150	TNCN364962	360x490 x620	15	28,8	160	65	NA	-40 to +55	-40 to +50/55	330 x490	4x Ø12	IP43	149
EXbatt™ 3680	36	80	TNCN614962	615x490 x620	8	43,2	80	65	NA	-40 to +55	55	580 x665	6x Ø12	IP43	148
EXbatt™ 36150	36	150	TNCN614962	615x490 x620	15	43,2	160	65	NA	-40 to +55	-40 to +50/55	580 x665	6x Ø12	IP43	220
EXbatt™ 4880	48	80	TNCN614962	615x490 x620	8	57,6	80	65	NA	-40 to +55	55	580 x665	6x Ø12	IP43	175
EXbatt™ 48150	48	150	TNCN614962	615x490 x620	15	57,6	160	65	NA	-40 to +55	-40 to +50/55	580 x665	6x Ø12	IP43	271
EXbatt™ 24750 Type 3	24	750	TNCN817390	810x730 x900	210	28,8	210	60	-20 to +45	NA	NA	764 x620	4x Ø12	IP43	780
EXbatt™ 24900 Type 2	24	900	TNCN1309591	1300x910 x910	80	28,8	80	60	-20 to +45	NA	NA	1247 x850	4x Ø12	IP45	710
EXbatt™ 241170 Type 1	24	1170	TNCN1309591	1300x910 x910	80	28,8	80	60	-20 to +45	NA	NA	1247 x850	4x Ø12	IP45	1200

## BARTEC TECHNOR AS

Vestre Svanholmen 24  
4313 Sandnes, Norway

Tel.: +47 51 84 41 00  
Mail: sales@bartec-technor.no

Web: bartec-technor.no  
Web: bartec.com

Technical data subject to change without notice.