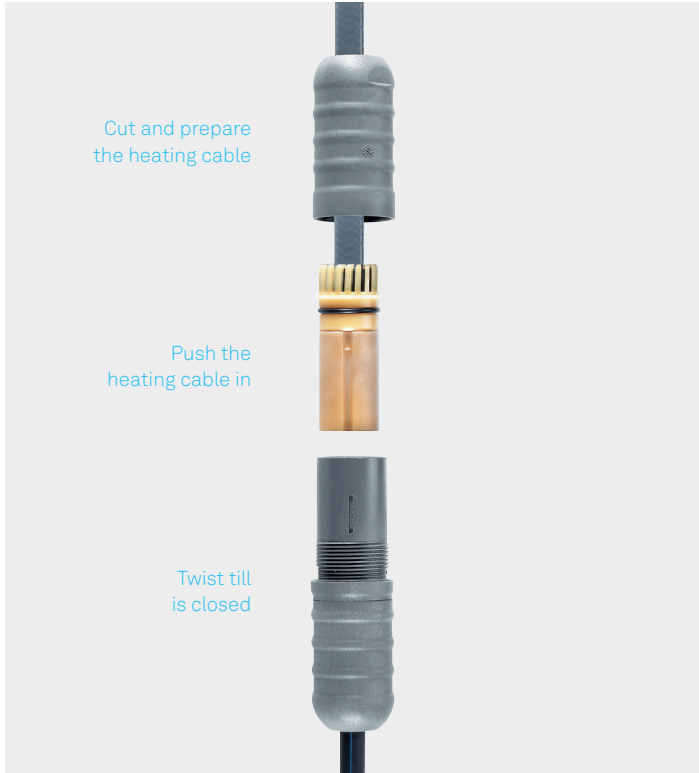


# TWISTO/L-B Connection technology

for the PSB or FT system



- Cost savings because of the reduced assembly time
- High reliability of assembly because of few and simple installation steps

Simpler and safer to use, yet at the same time faster and thus cheaper, is how the major benefits of the TWISTO/L-B can be described. This method of connection is for use with BARTEC heating cables of PSB or FT types.

All that is needed to assemble a heating circuit is a knife and diagonal cutter. This dispenses with the time-consuming work of exposing the two conductors, the laborious splicing and twisting of the protective braiding and then connecting to a terminal. Just a piece of the outer protective jacket is removed, a clamping sheet is fitted over a part of the exposed braiding, the remaining part is pulled back over the clamping sheet. The heating cable is then inserted into the clamp cutting fixture and by twisting together the two outer sleeves (one sleeve comes ready prepared with a 2 m long supply cable), the heating cable is contacted in the clamp cutting fixture. The end terminal consists of just one part, whereby the end of the heating cable is shortened and inserted into the terminal piece.

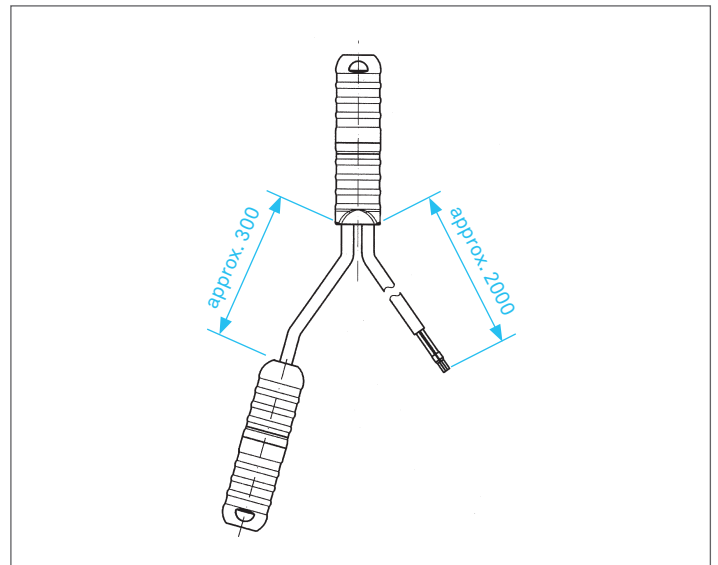
## Media protected

Certification system	CE
Other approvals and certificates, see <a href="http://www.bartec.com">www.bartec.com</a>	

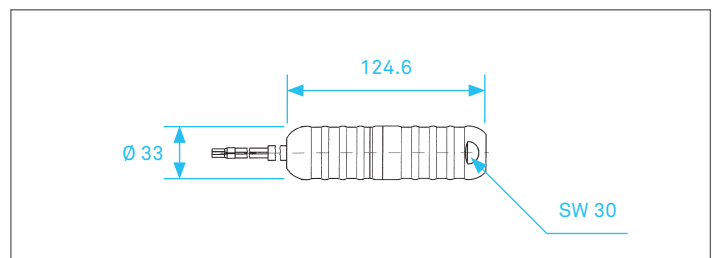
## Technical data

Nominal voltage	AC 250 V
Nominal current	16 A
Ambient temperature range, T-class	-20 °C to +85 °C, T85 -25 °C to +60 °C, T60
Protection class according to EN 60529	IP 66
Dimensions	Connection Diameter 33 x 125 (135) mm End termination 23 x 20 x 37.5 mm
Connection	with 2 m ready-prepared connection cable (3 x 1.5 mm <sup>2</sup> ) T60: rubber cable H07RN-F T85: silicone cable H05SS-F

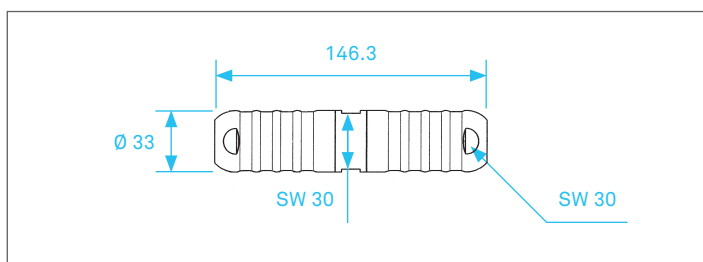
## Dimensions TWISTO/L-B-TE2 (in mm)



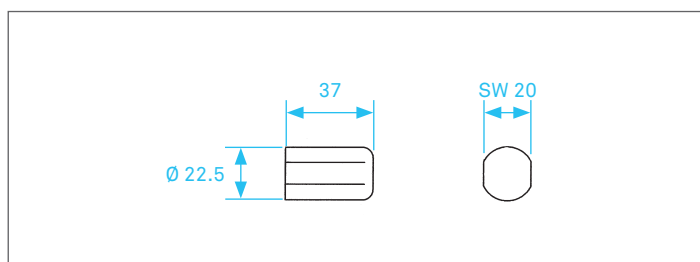
## Dimensions TWISTO/L-B-A (in mm)



**Dimensions TWISTO/L-B-C (in mm)**



**Dimensions TWISTO/L-B-E (in mm)**



**Ordering information**

Connection technology	Description	Short form title	Order no. T-class 60	Order no. T-class 85
	Connection to supply cable and end termination as set	TWISTO/L-B-S	27-56LK-DC42B000	27-56LK-DC22A000
	Connection to supply cable	TWISTO/L-B-A	27-56LG-DC42B000	27-56LG-DC22A000
	End termination	TWISTO/L-B-E	27-56LJ-DC00B000	27-56LJ-DC00A000
	Heating cable connection	TWISTO/L-B-C	27-56LH-DC00B000	27-56LH-DC00A000
	T-branch for 3 x heating tape 1 End termination	TWISTO/L-B-T	27-56LL-DC00B000	27-56LL-DC00A000
	T-branch with power connection and 2 x heating cable 2 End termination	TWISTO/L-B-TE2	27-56LM-DC42B000	27-56LM-DC22A000
	T-branch with power connection and 3 x heating cable 3 End termination	TWISTO/L-B-TE3	27-56LN-DC42B000	27-56LN-DC22A000
	X-branch for 4 x heating cable 2 End termination	TWISTO/L-B-X	27-56LP-DC00B000	27-56LP-DC00A000